

Fast & Easy Brass fittings

We are professional manufacturer of solar water heater, not only produce the robust and beautiful product, also offer the convenient and safe copper pipe connector, which has three characters:
simple use, easy knock-down and repeat use (no need any welding).



Work Principle

The key part of copper connector is movable soft rubber seal ring, which can automatically adjust its shape by pressure, then seal up completely. In the condition of non-pressure, copper connector and copper pipe can be removed easily, then be used again.

Features

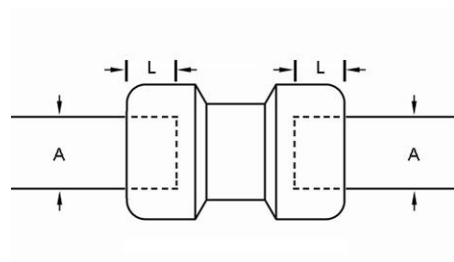
- Copper connector adapt the brass material, after forging and pressing, it has high strength, good durability and pressure resistance;
- Can be installed, removed, and reused easily;
- Safe and reliable, no damage to other pipes

Advantage

- Rapid and flexible installation, no need professional staff, saving installation cost;
- Optimal design of piping
- Reasonable structure
- Guarantee for safe performance
- Shock proof, collision proof, good performance to cope with expanding when heating and contracting when cooling.

Copper pipe with copper fitting connect

A (mm)	15	22	28	35
copper pipe diameter				
L (mm)	20	25	31	33



Attention

- Allowed for water and other food quality liquids (not allowed for gas)
- Burr, overlap and crack are not allowed on the port of copper pipe.
- In the process of installation, keep copper pipe horizontal with copper fitting and connector.
- Make sure that port of copper pipe has no deformation.
- Recommended: working pressure < 1.3 MPa (13 Bars) and temperature < 110 °C
- Maximum: working pressure < 1.6 MPa (16 Bars) and temperature < 160 °C

Datasheet

No.	Copper fitting	Connect	No.	Copper fitting	Connect
1		Copper pipe x copper pipe	2		Copper pipe x copper pipe
		Φ15 x Φ15mm			Φ15 x Φ15mm
		Φ15 x Φ22mm			Φ15 x Φ22mm
		Φ22 x Φ22mm			Φ22 x Φ22mm
		Φ22 x Φ28mm			Φ22 x Φ28mm
		Φ28 x Φ28mm			Φ28 x Φ28mm
		Φ28 x Φ35mm			Φ28 x Φ35mm
		Φ35 x Φ35mm			Φ35 x Φ35mm
3		Copper pipe x thread	4		Copper pipe x thread
		Φ15 mm x G 1/2"			Φ15 mm x G 1/2"
		Φ15 mm x G 3/4"			Φ15 mm x G 3/4"
		Φ22 mm x G 1/2"			Φ22 mm x G 1/2"
		Φ22 mm x G 3/4"			Φ22 mm x G 3/4"
		Φ28 mm x G 3/4"			Φ28 mm x G 3/4"
		Φ28 mm x G 1"			Φ28 mm x G 1"
		Φ35 mm x G 3/4"			Φ35 mm x G 3/4"
5		Copper pipe x thread	6		Copper pipe x thread
		Φ15 mm x G 1/2"			Φ15 mm x G 1/2"
		Φ15 mm x G 3/4"			Φ15 mm x G 3/4"
		Φ22 mm x G 1/2"			Φ22 mm x G 1/2"
		Φ22 mm x G 3/4"			Φ22 mm x G 3/4"
		Φ28 mm x G 3/4"			Φ28 mm x G 3/4"
		Φ28 mm x G 1"			Φ28 mm x G 1"
		Φ35 mm x G 3/4"			Φ35 mm x G 3/4"
7		Copper pipe x thread	8		Copper pipe x Copper pipe
		Φ15 mm x Φ15 mm x G 1/2"			Φ15 x Φ15 x Φ15 mm
		Φ15 mm x Φ15 mm x G 3/4"			Φ22 x Φ22 x Φ15 mm
		Φ22 mm x Φ22 mm x G 1/2"			Φ22 x Φ22 x Φ22 mm
		Φ22 mm x Φ22 mm x G 3/4"			Φ28 x Φ28 x Φ22 mm
		Φ28 mm x Φ28 mm x G 3/4"			Φ28 x Φ28 x Φ28 mm
		Φ28 mm x Φ28 mm x G 1"			Φ35 x Φ35 x Φ28 mm
		Φ35 mm x Φ35 mm x G 3/4"			Φ35 x Φ35 x Φ35 mm
9		Copper pipe x Copper pipe	10		Copper pipe
		Φ15 x Φ15mm			Φ15mm
		Φ15 x Φ22mm			Φ22mm
		Φ22 x Φ22mm			Φ28mm
		Φ22 x Φ28mm			Φ35mm
		Φ28 x Φ28mm			
		Φ28 x Φ35mm			
		Φ35 x Φ35mm			